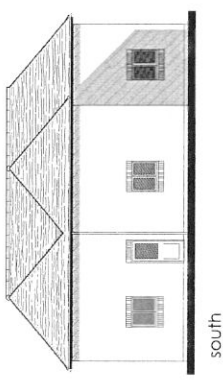
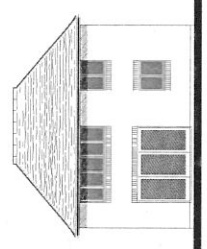


Combined east elevation

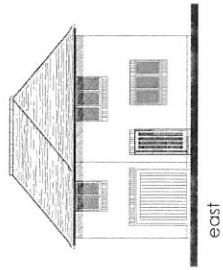
plain clay tile roofs eadded dormers and new dormers, cast rainwater goods, red mulleberry facing bricks, stone/corbel soldier arch hoods and eills, painted timber windows hardwood doors, timber vertical slatted garage doors.



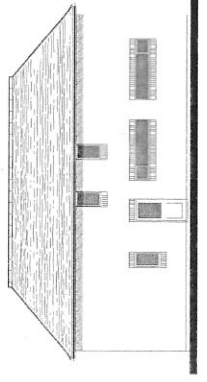
south



west



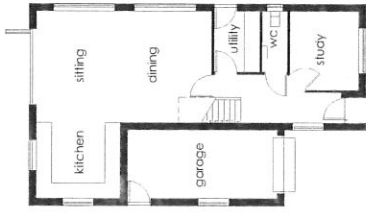
east



north

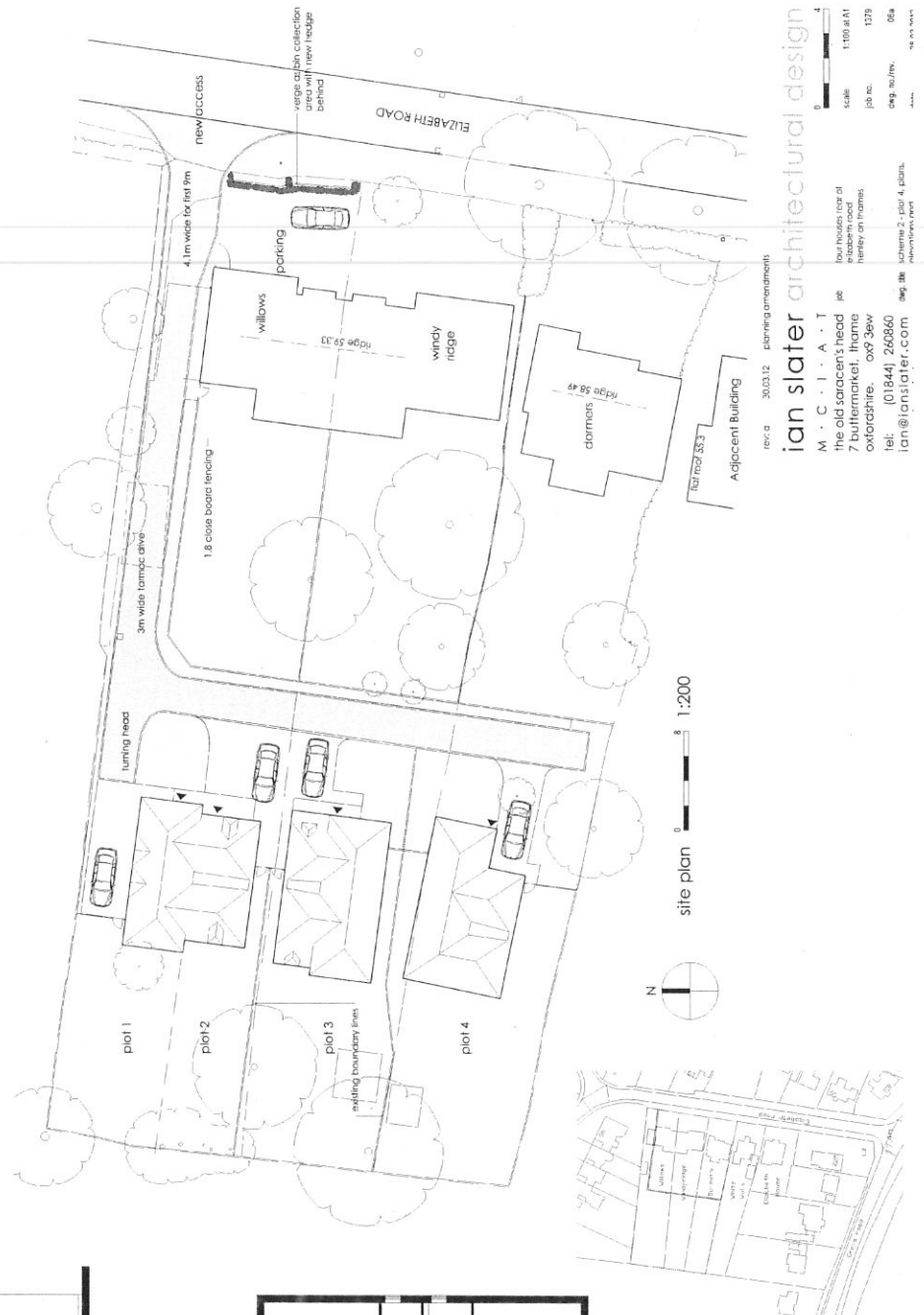


first



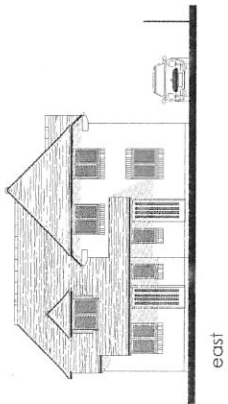
ground

PLOT 4

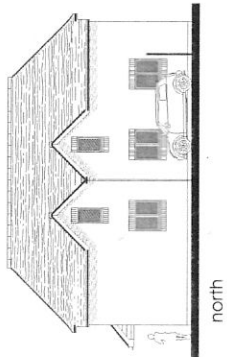


site plan 1:200

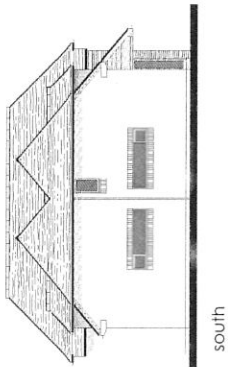
rev a 30.03.12 planning amendments
 M · C · I · A · T
 The old Saracen's Head pub
 7 Butlermarket, Ilgarnie
 Oxfordshire, OX7 3EW
 tel: (01844) 260860
 ian@ianslater.com
 scale 1:100 A41
 job no. 1279
 eng. no./m. 08a
 14.04.2012



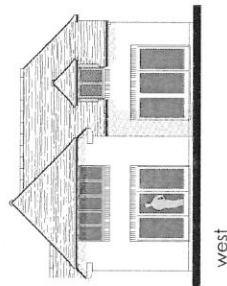
east



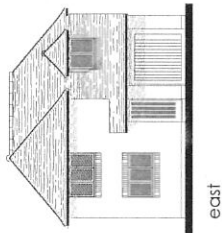
north



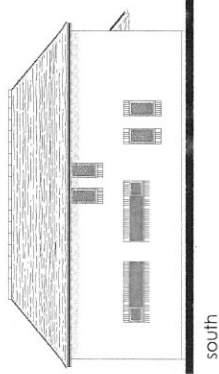
south



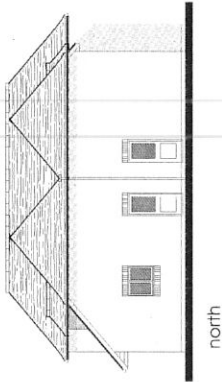
west



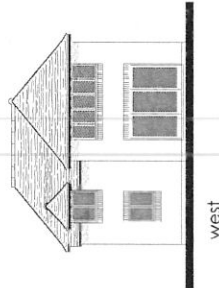
east



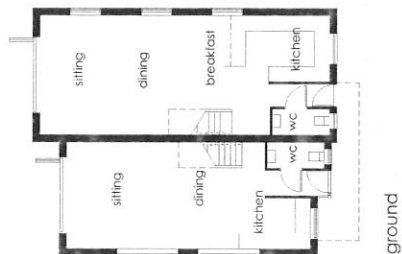
south



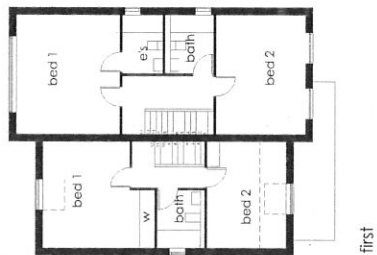
north



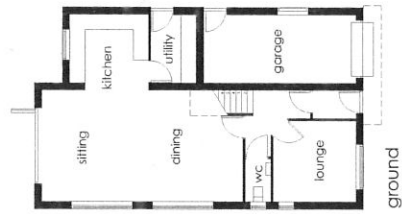
west



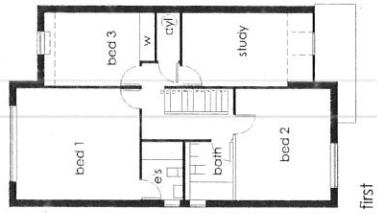
ground



first



ground



first

PLOT 1 & 2

PLOT 3

rev: a 30.03.12 planning amendments
 ian slater architectural design
 M . C . I . A . T
 the old saracen's head 70
 7 bulfinchmarket, thame
 oxfordshire. ox9 3ew
 tel: (01844) 260860
 ian@ianslater.com
 job no. 1379
 scale 1:100 at A1
 job no. 059
 date 04.03.12